



Juno JIRAM

Report JM0001

JIR-IAPS-SY-001-2017
Version 1.0

April 05, 2017

Prepared by:

R. Noschese, A. Cicchetti, A. Mura, H. N. Becker, S. Brooks

Approved by:

A. Adriani

		JIR-IAPS-SY-001-2017		
		Issue	1.0	05/04/17
	JUNO/JIRAM		Page	2

Table of Contents

1	INTRODUCTION	3
2	REFERENCES	3
3	ACTIVITY DESCRIPTION	3
4	RADIATIONS ACQUISITION	5
5	SCIENTIFIC GOALS.....	7
6	DATA COLLECTION OVERWIER.....	8
7	SCIENTIFIC RESULTS.....	9
	A.1 Commanding file (sarf)	12

List of Figures

Figure 1: Pointing stability ALDEBARAH (JM_015-JM_016).....	4
Figure 2: Pointing stability ALDEBARAH (JM_017-JM_021).....	4
Figure 3: Pointing stability ALDEBARAH (JM_022-JM_023).....	5
Figure 4: ALDEBARAH image in L band (linear scale).....	10
<i>Figure 5: ALDEBARAH image in L band (Logarithmic scale)</i>	<i>10</i>
<i>Figure 6: ALDEBARAH image in M band (Linear scale)</i>	<i>11</i>
<i>Figure 7: ALDEBARAH image in M band (Logarithmic scale)</i>	<i>11</i>

List of Tables

<i>Table 1: Radiation data</i>	<i>7</i>
<i>Table 2: Scientific Goals</i>	<i>8</i>
<i>Table 3: Data Overwier</i>	<i>9</i>

			JIR-IAPS-SY-001-2017	
			Issue	1.0
	JUNO/JIRAM		Page	3

1 INTRODUCTION

This document describes the activities that JIRAM performed during the activity period JM0001, with particular attention to the comparison with the expected data and that achieved, keeping track of the configuration of the instrument with commanding file (sasf).

2 REFERENCES

Becker, H.N., J.W. Alexander, A. Adriani, A. Mura, A. Cicchetti, R. Noschese, J.L. Jørgensen, T. Denver, J. Sushkova, A. Jørgensen, M. Benn, J.E.P. Connerney, S.J. Bolton, the Selex Galileo Juno SRU Team, J. Allison, S. Watts, V. Adumitroaie, E.A. Manor-Chapman, I.J. Daubar, C. Lee, S. Kang, W.J. McAlpine, T. Di Iorio, C. Pasqui, A. Barbis, P. Lawton, L. Spalsbury, S. Loftin, and J. Sun (2017), The Juno Radiation Monitoring (RM) Investigation, Space Sci Rev, doi: 10.1007/s11214-017-0345-9.”

3 ACTIVITY DESCRIPTION

JIRAM is turned on for the first time after the insertion maneuver in orbit around JUPITER. In the first part of the test have been performed the following three calibrations:

- Calibration Lamp 1
- Calibration Lamp 2
- Calibration of both Lamps

This allowed us to verify that the instrument did not suffer any functional impairment as a result of the insertion maneuver.

Subsequently a scientific observation section was performed on EUROPA, which has allowed us to also validate the scientific integrity of the instrument.

In the last part of the test we have successfully carried out observations on ALDEBARAN and the HYADES, which allowed us to collect data for the calibration of instrument. Jiram has been commanded to perform scans of the sky where ALDEBARAN is on 20 July 2016. The offset was increasing of 0.0094169 deg (about $\frac{3}{4}$ of a pixel) for each image. For each image, the SCET has been used to derive the predicted angle. Because a predict C kernel was not available at the time these observations were designed, the appropriate timing and timing offsets, as well as the required pointing for the primary spin axis, were calculated using the Juno reference trajectory and JIRAM frame definition. The time difference should be constant (assuming JUNO rotation period is constant) but it was not, showing that there was a difference between the commanded angle and the predicted one.

The centroid of Aldebaran in the M band has been used to calculate the actual angle of pointing of JIRAM. Since the star is a very easy target, and the centroid is calculated by using ~10 pixels, we can assume that this analysis has an intrinsic error of less than 1 pixel.

The following images show that there is ~ 0.009 deg error in the prediction and then an additional ~ 0.003 error in the performing of the acquisition. This result has been confirmed by data from Galilean moons. On average, JIRAM pointing precision can't be better than 1 pixel.

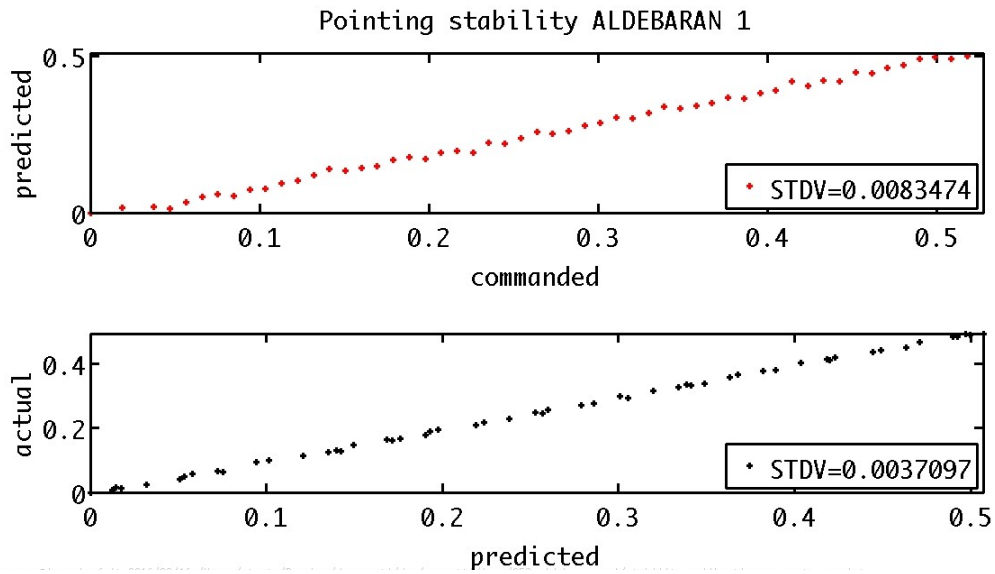


Figure 1: Pointing stability ALDEBARAH (JM_015-JM_016)

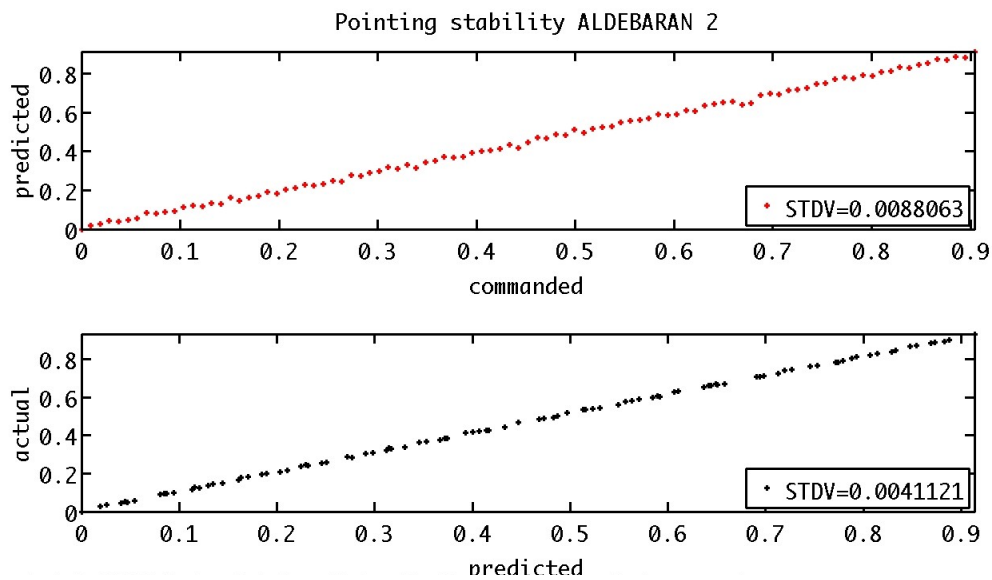


Figure 2: Pointing stability ALDEBARAH (JM_017-JM_021)

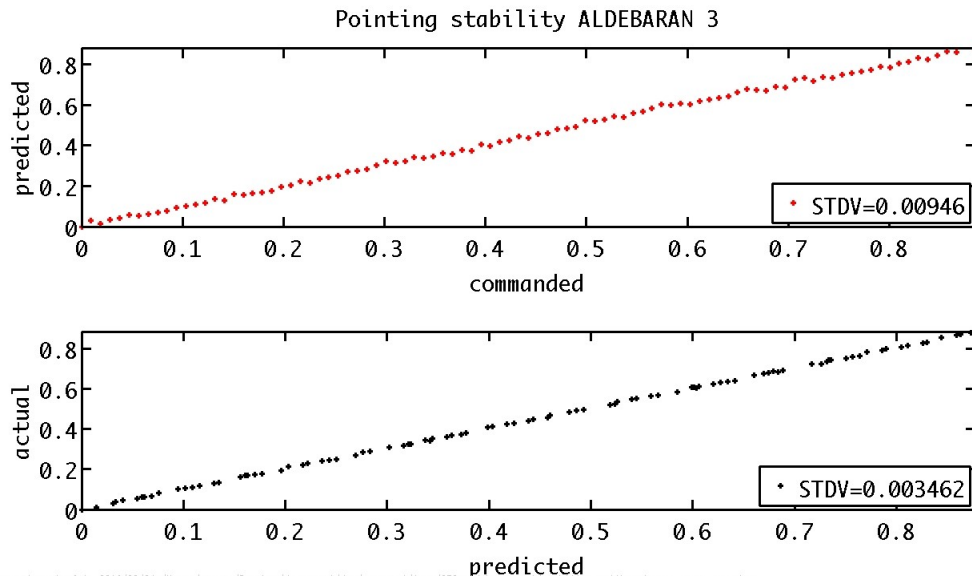


Figure 3: Pointing stability ALDEBARAH (JM_022-JM_023)

4 RADIATIONS ACQUISITION

Seven radiation sequences (21 images, each collected with a 1 second exposure time and subsequent on-board read noise subtraction) were collected for the objective of updating the “good pixel location map” which is used during processing of JIRAM radiation data. These images were collected in a low radiation condition on July 20, 2016, following Juno’s first pass through Jupiter’s radiation belts and the Jupiter orbit insertion. The images were collected while turning the instrument de-spinning mirror to the calibration lamp with the lamp OFF to create a dark condition. The analysis of the images is discussed in *Becker et al.* [2017].

Four additional radiation sequences were collected to study the linearity of the IMG detector at low signal levels. The on-board read noise subtraction and dark conditions were as described above, but the IMG exposure times were reduced. Three images were collected at each of the following exposure times: 50, 100, 200, and 500 ms. A study of the change in pixel signal values at the different exposure times showed a linear behavior for low signal levels (i.e. ranging from ~10DN-100DN).

Following the list of Radiation observations:

			JIR-IAPS-SY-001-2017	
			Issue	1.0
	JUNO/JIRAM		Page	6

Radiation Data

JIR_IMG_EDR_2016202T154629_V01.IMG
 JIR_IMG_EDR_2016202T154801_V01.IMG
 JIR_IMG_EDR_2016202T154902_V01.IMG
 JIR_IMG_EDR_2016202T155105_V01.IMG
 JIR_IMG_EDR_2016202T155206_V01.IMG
 JIR_IMG_EDR_2016202T155338_V01.IMG
 JIR_IMG_EDR_2016202T155541_V01.IMG
 JIR_IMG_EDR_2016202T155642_V01.IMG
 JIR_IMG_EDR_2016202T155815_V01.IMG
 JIR_IMG_EDR_2016202T155947_V01.IMG
 JIR_IMG_EDR_2016202T160119_V01.IMG
 JIR_IMG_EDR_2016202T160251_V01.IMG
 JIR_IMG_EDR_2016202T160423_V01.IMG
 JIR_IMG_EDR_2016202T160555_V01.IMG
 JIR_IMG_EDR_2016202T160657_V01.IMG
 JIR_IMG_EDR_2016202T160859_V01.IMG
 JIR_IMG_EDR_2016202T161031_V01.IMG
 JIR_IMG_EDR_2016202T161133_V01.IMG
 JIR_IMG_EDR_2016202T161336_V01.IMG
 JIR_IMG_EDR_2016202T161437_V01.IMG
 JIR_IMG_EDR_2016202T161609_V01.IMG
 JIR_IMG_EDR_2016202T161812_V01.IMG
 JIR_IMG_EDR_2016202T161913_V01.IMG
 JIR_IMG_EDR_2016202T162045_V01.IMG
 JIR_IMG_EDR_2016202T162217_V01.IMG
 JIR_IMG_EDR_2016202T162349_V01.IMG
 JIR_IMG_EDR_2016202T162521_V01.IMG
 JIR_IMG_EDR_2016202T162653_V01.IMG
 JIR_IMG_EDR_2016202T162825_V01.IMG
 JIR_IMG_EDR_2016202T162927_V01.IMG
 JIR_IMG_EDR_2016202T163129_V01.IMG

<p>JIR_IMG_EDR_2016202T163302_V01.IMG</p> <p>JIR_IMG_EDR_2016202T163403_V01.IMG</p>

Table 1: Radiation data

5 SCIENTIFIC GOALS

Below is a table that describes for each science block in the commanding file the relative operative mode and the scientific objectives. The files relating to the various science blocks are shown in the file “JIR_STATUS_EDR_2016192T080310_V01.CSV” in the INDEX directory.

JRM (sarf)	Operative Mode	Goals
JRM_004	CAL_I1_S1	Calibration Lamp 1
JRM_005	CAL_I1_S1	Calibration Lamp 2
JRM_006	CAL_I1_S1	Calibration Both Lamps
JRM_007	SCI_I1_S1	EUROPA
JRM_008	CAL_I1_S1	Calibration
JRM_014	CAL_I1_S1	Calibration
JRM_015	SCI_I1_S1	ALDEBARAN
JRM_016	SCI_I1_S1	ALDEBARAN
JRM_017	SCI_I1_S1	ALDEBARAN
JRM_021	SCI_I1_S1	ALDEBARAN
JRM_022	SCI_I1_S1	ALDEBARAN
JRM_023	SCI_I1_S1	ALDEBARAN

From JRM_024 To JRM_034	SCI_I1_S0	RADIATION
JRM_035	CAL_I1_S1	Calibration

Table 2: Scientific Goals

6 DATA COLLECTION OVERWIER

Below is a table that give an overwier of the data collected during the activity period JM0001. The table describes, for each science block in the commanding file, the programmed operative modes, with the real collected data.

JRM (saf)	Operative Mode	Observations	Packets Retrived	Packets Exepected	Missing Observations SPE	Missing Observations IMG
JRM_004	CAL_I1_S1	6 IMG 6 SPE	72	72	0	0
JRM_005	CAL_I1_S1	6 IMG 6 SPE	72	72	0	0
JRM_006	CAL_I1_S1	6 IMG 6 SPE	72	72	0	0
JRM_007	SCI_I1_S1	120 IMG 120 SPE	1434	1440	55	0
JRM_008	CAL_I1_S1	6 IMG 6 SPE	72	72	0	0
JRM_014	CAL_I1_S1	6 IMG 6 SPE	72	72	0	0
JRM_015	SCI_I1_S1	150 IMG 150 SPE	1770	1800	149-150	148-149-150
JRM_016	SCI_I1_S1	100 IMG 100 SPE	1188	1200	100	100
JRM_017	SCI_I1_S1	150 IMG 150 SPE	1770	1800	149-150	148-149-150

JRM_021	SCI_I1_S1	150 IMG 150 SPE	1764	1800	148-149-150	148-149-150
JRM_022	SCI_I1_S1	100 IMG 100 SPE	1176	1200	99-100	99-100
JRM_023	SCI_I1_S1	150 IMG 150 SPE	1776	1800	149-150	149-150
JRM_024 To JRM_034	SCI_I1_S0	33 IMG	198	198	N/A	0
JRM_035	CAL_I1_S1	6 IMG 6 SPE	72	72	0	0

Table 3: Data Overwier

7 SCIENTIFIC RESULTS

Aldebaran image in L band (see Fig.4-5), obtained by averaging on all images where the star was on L band (1st block of data only). The star fills more than a single pixel. To ensure that all the light is collected, the data is integrated over all pixels (actually, only ~9 pixels give a significant contribution). Same for M band (see Fig. 6-7)

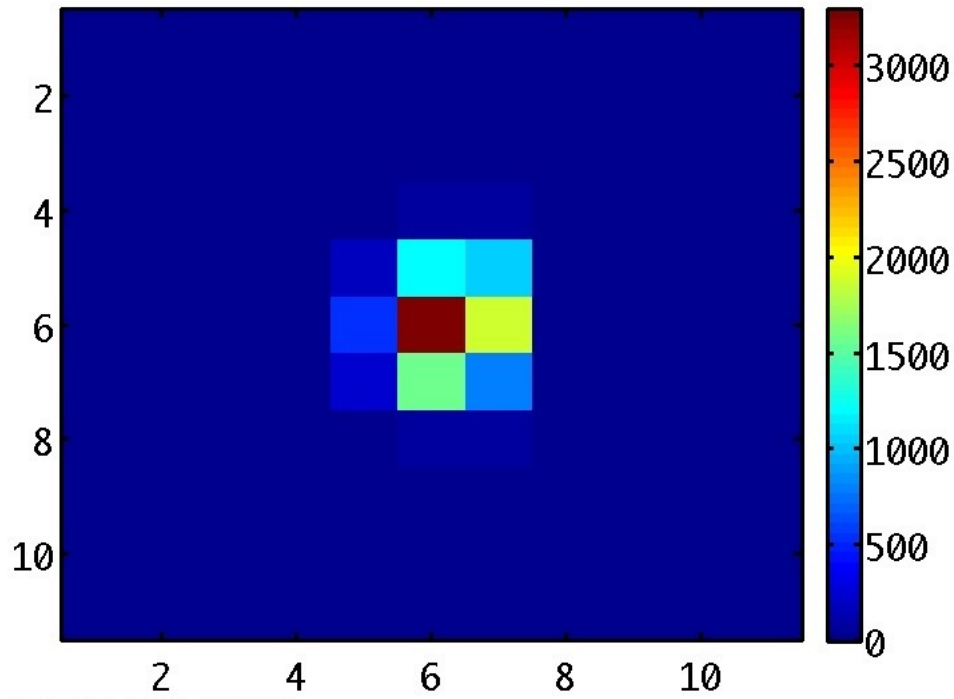


Figure 4: ALDEBARAH image in L band (linear scale)

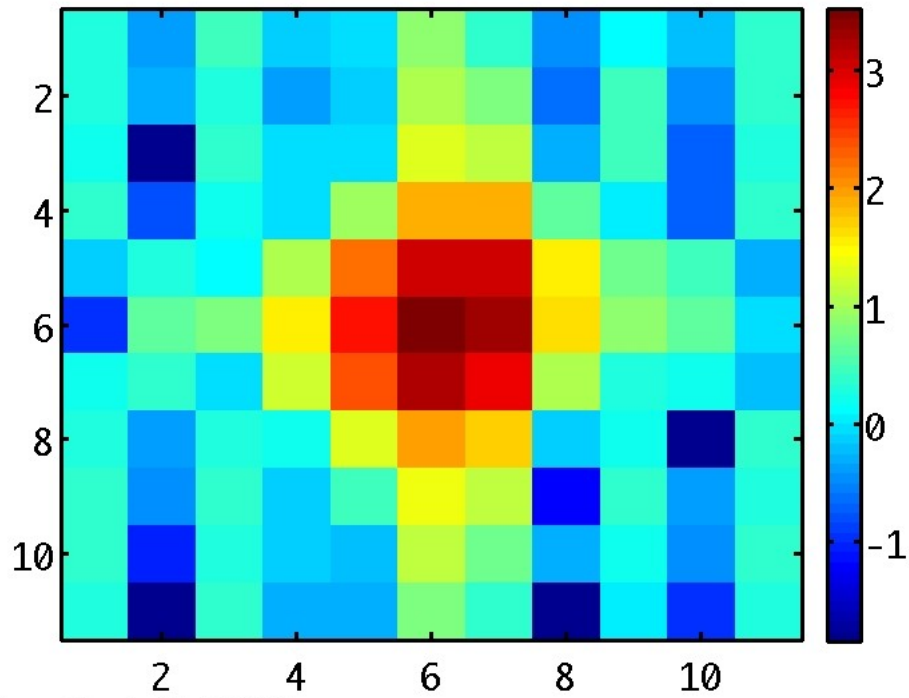


Figure 5: ALDEBARAH image in L band (Logarithmic scale)

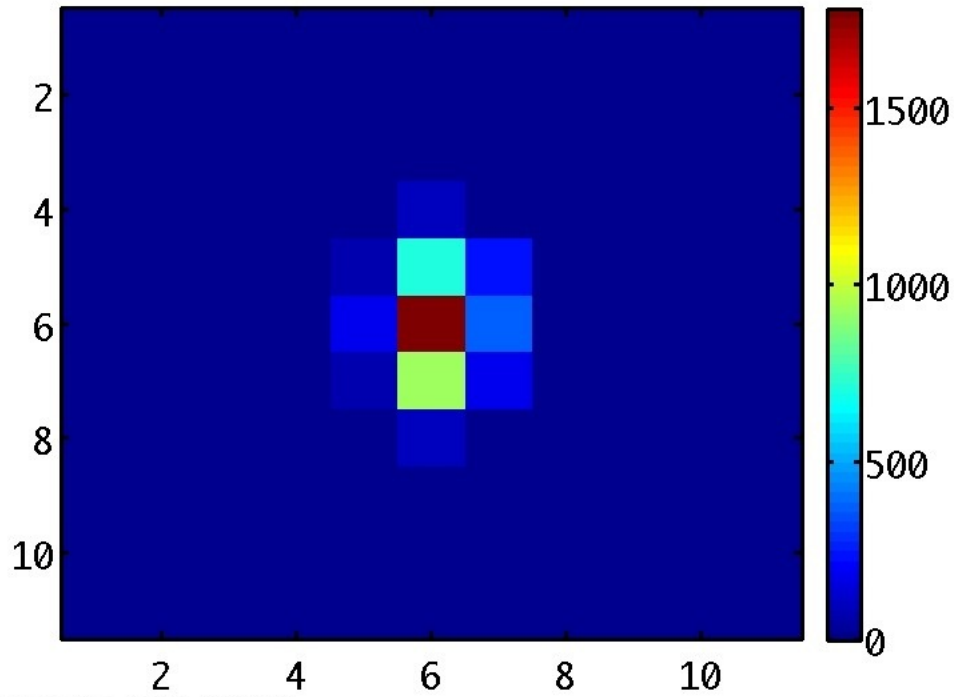


Figure 6: ALDEBARAH image in M band (Linear scale)

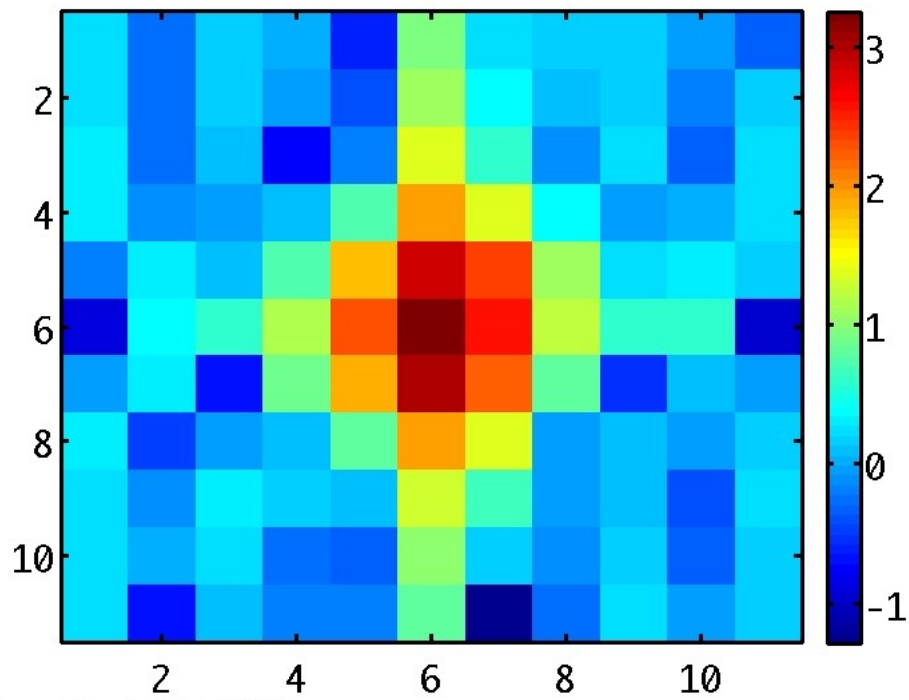


Figure 7: ALDEBARAH image in M band (Logarithmic scale)

			JIR-IAPS-SY-001-2017	
			Issue	1.0
	JUNO/JIRAM		Page	12

A.1 Commanding file (sarf)

```

*****
JIRAM_PLAN_ORBIT1GRAV_PJ-1157h_PJ-1156h_(pcp).jir
AP00_jm0001_C_Radiation_Sequence_requests_EP_v03.rad
*****

CCSD3ZF0000100000001NJPL3KS0L015$$MARK$$;
MISSION_NAME = JUNO;
SPACECRAFT_NAME = JUNO;
DATA_SET_ID = SPACECRAFT_ACTIVITY_SEQUENCE_JRM;
FILE_NAME = jm0001_JRMb.sarf;
APPLICABLE_START_TIME = 2016-192T00:00:00.000;
APPLICABLE_STOP_TIME = 2016-211T00:00:00.000;
PRODUCT_CREATION_TIME = 2016-161T20:57:54.000;
PRODUCER_ID = JRMTEAM;
SEQ_ID = jm0001_JRMb;
HOST_ID = JRM_CMD_jm0001_V08.jrm;
CCSD3RE00000$$MARK$$NJPL3IF0M01300000001;
$$JNO      SPACECRAFT ACTIVITY SEQUENCE FILE
*****
*PROJECT    JNO
*SPACECRAFT 61
*OPERATOR   JRMTEAM
*FILE_CMPLT TRUE
*DATE       Thu Jun 09 20:57:54 2016
*BEGIN      2016-192T00:00:00.000
*CUTOFF     2016-211T00:00:00.000
*TITLE      jm0001_JRMb
*EPOCHS_DEF
*jm0001_JRM,      2016-192T00:00:00.000
*EPOCHS_END
*Input files used:
*File Type  Last modified          File name
*****
$$EOH
$$EOD
request(JRM_Sequence_Management_Request,
        START_TIME,2016-192T00:00:00.000,
        TITLE, "JRM_MAINTENANCE",
        REQUESTOR, "JRMTEAM",
        PROCESSOR, "VC2",
        KEY, "No_Key")

activity(1,
        SCHEDULED_TIME,\00:00:00\,FROM_REQUEST_START,
        SEQTRAN_directive
        (VML_START,2001-001T00:00:00.000,2030-
001T00:00:00.000,"ABSLTE","jm0001_JRM","jm0001_JRM.abs","d:/seq")
        ),
command(2,
        SCHEDULED_TIME,\00:00:30\,FROM_PREVIOUS_START,

```

			JIR-IAPS-SY-001-2017	
			Issue	1.0
	JUNO/JIRAM		Page	13

```

        FILE_DELETE("d:/seq/jm0001_JRM.abs")
    ),
    command(3,
        SCHEDULED_TIME,\018T23:59:58\,FROM_REQUEST_START,
        VM_LOAD(20,"d:/seq/jm0002_JRM.abs")
    ),
end;

request(JRM_001,
    START_TIME,2016-192T02:38:36.000,
    TITLE,"jm0001_JRM_Heater_Op",
    REQUESTOR,"JRMTEAM",
    PROCESSOR,"VC2",
    KEY,"No_Key")
    command(1,
        SCHEDULED_TIME,\00:00:00\,FROM_REQUEST_START,
        THRM_SET_PT_SEL("JIRAM_OH","OPERATIONAL")
    ),
    command(2,
        SCHEDULED_TIME,\00:00:01\,FROM_PREVIOUS_START,
        THRM_SET_PT_SEL("JIRAM_DECON","OPERATIONAL")
    ),
    command(3,
        SCHEDULED_TIME,\03:10:00\,FROM_PREVIOUS_START,
        THRM_SET_PT_SEL("JIRAM_ELECT_BP","OPERATIONAL")
    ),
    note(1,
        SCHEDULED_TIME,\00:00:04\,FROM_PREVIOUS_START,
        TEXT,\"NaN\"
    ),
end;

request(JRM_002,
    START_TIME,2016-192T07:59:36.000,
    TITLE,"jm0001_JRM-POWER_ON",
    REQUESTOR,"JRMTEAM",
    PROCESSOR,"VC2",
    KEY,"No_Key")
    spawn(1,
        SCHEDULED_TIME,\00:00:00\,FROM_REQUEST_START,
        REQ_ENGINE_ID,21,RT_on_board_block(jiram_pwr_on)
    ),
    note(1,
        SCHEDULED_TIME,\00:00:04\,FROM_PREVIOUS_START,
        TEXT,\"NaN\"
    ),
end;

request(JRM_003,
    START_TIME,2016-192T08:02:19.000,
    TITLE,"jm0001_JRM_StandBy",
    REQUESTOR,"JRMTEAM",
    PROCESSOR,"VC2",
    KEY,"No_Key")
    command(1,
        SCHEDULED_TIME,\00:00:00\,FROM_REQUEST_START,
        JRM_SET_PAR(111,2)

```

			JIR-IAPS-SY-001-2017		
			Issue	1.0	05/04/17
	JUNO/JIRAM		Page	14	of

```

),
command(2,
    SCHEDULED_TIME,\00:00:04\,FROM_PREVIOUS_START,
    JRM_STANDBY("ON","ON","ON")
),
command(3,
    SCHEDULED_TIME,\00:00:04\,FROM_PREVIOUS_START,

JRM_SCI_PAR("SCI_I1_S3",120,1,10,"IDIS_SDIS","HSSL","ENABLE","DARK","DISABLE
",0,956,2,150,"LOW","LOW","POINT",-
57343,2,150,"LOW","LOW","SPIN",0,"NO_SUMMED_SCI")
),
    note(1,
        SCHEDULED_TIME,\00:00:04\,FROM_PREVIOUS_START,
        TEXT,\"NaN\"
    ),
end;

request(JRM_004,
    START_TIME,2016-192T08:02:31.000,
    TITLE,"jm0001_JRM_Calibration",
    REQUESTOR,"JRMTEAM",
    PROCESSOR,"VC2",
    KEY,"No_Key")
command(1,
    SCHEDULED_TIME,\00:00:00\,FROM_REQUEST_START,
    JRM_ERROR_LOG()
),
command(2,
    SCHEDULED_TIME,\00:00:04\,FROM_PREVIOUS_START,

JRM_CAL_PAR(8,14,8,14,30,700,30,700,30,700,30,700,200,200,153,153)
),
command(3,
    SCHEDULED_TIME,\00:00:04\,FROM_PREVIOUS_START,
    JRM_GET_PAR(6000)
),
command(4,
    SCHEDULED_TIME,\00:00:04\,FROM_PREVIOUS_START,
    JRM_START_HS_REC()
),
command(5,
    SCHEDULED_TIME,\00:00:04\,FROM_PREVIOUS_START,
    JRM_CALIBRATION("CAL_I1_S1","IDIS_SDIS","DISABLE",1,"LAMP_1")
),
command(6,
    SCHEDULED_TIME,\00:04:00\,FROM_PREVIOUS_START,
    JRM_STOP_HS_REC()
),
    note(1,
        SCHEDULED_TIME,\00:00:04\,FROM_PREVIOUS_START,
        TEXT,\"Lamp1\"
    ),
end;

request(JRM_005,
    START_TIME,2016-192T08:06:51.000,

```

			JIR-IAPS-SY-001-2017	
			Issue	1.0
	JUNO/JIRAM		Page	15

```

TITLE, "jm0001_JRM_Calibration",
REQUESTOR, "JRMTEAM",
PROCESSOR, "VC2",
KEY, "No_Key")
command(1,
  SCHEDULED_TIME,\00:00:00\,FROM_REQUEST_START,
  JRM_ERROR_LOG()
),
command(2,
  SCHEDULED_TIME,\00:00:04\,FROM_PREVIOUS_START,

JRM_CAL_PAR(8,14,8,14,30,700,30,700,30,700,30,700,200,200,153,153)
),
command(3,
  SCHEDULED_TIME,\00:00:04\,FROM_PREVIOUS_START,
  JRM_GET_PAR(6000)
),
command(4,
  SCHEDULED_TIME,\00:00:04\,FROM_PREVIOUS_START,
  JRM_START_HS_REC()
),
command(5,
  SCHEDULED_TIME,\00:00:04\,FROM_PREVIOUS_START,
  JRM_CALIBRATION("CAL_I1_S1","IDIS_SDIS","DISABLE",1,"LAMP_2")
),
command(6,
  SCHEDULED_TIME,\00:04:00\,FROM_PREVIOUS_START,
  JRM_STOP_HS_REC()
),
note(1,
  SCHEDULED_TIME,\00:00:04\,FROM_PREVIOUS_START,
  TEXT,\"Lamp2\"\
),
end;

request(JRM_006,
  START_TIME,2016-192T08:11:11.000,
  TITLE, "jm0001_JRM_Calibration",
  REQUESTOR, "JRMTEAM",
  PROCESSOR, "VC2",
  KEY, "No_Key")
command(1,
  SCHEDULED_TIME,\00:00:00\,FROM_REQUEST_START,
  JRM_ERROR_LOG()
),
command(2,
  SCHEDULED_TIME,\00:00:04\,FROM_PREVIOUS_START,

JRM_CAL_PAR(8,14,8,14,15,350,15,350,15,350,15,350,200,200,153,153)
),
command(3,
  SCHEDULED_TIME,\00:00:04\,FROM_PREVIOUS_START,
  JRM_GET_PAR(6000)
),
command(4,
  SCHEDULED_TIME,\00:00:04\,FROM_PREVIOUS_START,
  JRM_START_HS_REC()

```

			JIR-IAPS-SY-001-2017		
			Issue	1.0	05/04/17
	JUNO/JIRAM		Page	16	of

```

),
command(5,
    SCHEDULED_TIME,\00:00:04\,FROM_PREVIOUS_START,

JRM_CALIBRATION("CAL_I1_S1", "IDIS_SDIS", "DISABLE", 1, "BOTH_LAMPS")
),
command(6,
    SCHEDULED_TIME,\00:04:00\,FROM_PREVIOUS_START,
    JRM_STOP_HS_REC()
),
note(1,
    SCHEDULED_TIME,\00:00:04\,FROM_PREVIOUS_START,
    TEXT,\"Both-Lamps\"
),
end;

request(JRM_007,
    START_TIME,2016-192T08:15:31.000,
    TITLE, "jm0001_JRM_Science",
    REQUESTOR, "JRMTEAM",
    PROCESSOR, "VC2",
    KEY, "No_Key")
command(1,
    SCHEDULED_TIME,\00:00:00\,FROM_REQUEST_START,
    JRM_SET_PAR(74,0)
),
command(2,
    SCHEDULED_TIME,\00:00:04\,FROM_PREVIOUS_START,

JRM_SCI_PAR("SCI_I1_S1", 120, 1, 40, "IDIS_SDIS", "HSSL", "ENABLE", "DARK", "DISABLE",
, 0, 3, 5000, 5000, "LOW", "LOW", "POINT", -57343, 5000, 5000, "LOW", "LOW", "SPIN", -
159, "NO_SUMMED_SCI")
),
command(3,
    SCHEDULED_TIME,\00:00:04\,FROM_PREVIOUS_START,
    JRM_START_HS_REC()
),
command(4,
    SCHEDULED_TIME,\00:00:04\,FROM_PREVIOUS_START,
    JRM_SCIENCE()
),
command(5,
    SCHEDULED_TIME,\01:00:39\,FROM_PREVIOUS_START,
    JRM_ERROR_LOG()
),
command(6,
    SCHEDULED_TIME,\00:00:04\,FROM_PREVIOUS_START,
    JRM_STOP_HS_REC()
),
note(1,
    SCHEDULED_TIME,\00:00:04\,FROM_PREVIOUS_START,
    TEXT,\"pcp_europa\"
),
end;

request(JRM_008,
    START_TIME,2016-192T09:16:30.000,

```


			JIR-IAPS-SY-001-2017		
			Issue	1.0	05/04/17
	JUNO/JIRAM		Page	17	of

```

TITLE, "jm0001_JRM_Calibration",
REQUESTOR, "JRMTEAM",
PROCESSOR, "VC2",
KEY, "No_Key")
command(1,
    SCHEDULED_TIME,\00:00:00\,FROM_REQUEST_START,
JRM_CAL_PAR(8,14,8,14,30,700,30,700,30,700,30,700,200,200,153,153)
),
command(2,
    SCHEDULED_TIME,\00:00:04\,FROM_PREVIOUS_START,
    JRM_GET_PAR(6000)
),
command(3,
    SCHEDULED_TIME,\00:00:04\,FROM_PREVIOUS_START,
    JRM_START_HS_REC()
),
command(4,
    SCHEDULED_TIME,\00:00:04\,FROM_PREVIOUS_START,
    JRM_CALIBRATION("CAL_I1_S1","IDIS_SDIS","DISABLE",1,"LAMP_1")
),
command(5,
    SCHEDULED_TIME,\00:04:00\,FROM_PREVIOUS_START,
    JRM_STOP_HS_REC()
),
command(6,
    SCHEDULED_TIME,\00:00:04\,FROM_PREVIOUS_START,
    JRM_ERROR_LOG()
),
note(1,
    SCHEDULED_TIME,\00:00:04\,FROM_PREVIOUS_START,
    TEXT,\"NaN\"
),
end;

request(JRM_009,
    START_TIME,2016-192T09:20:50.000,
    TITLE, "jm0001_JRM-POWER_OFF",
    REQUESTOR, "JRMTEAM",
    PROCESSOR, "VC2",
    KEY, "No_Key")
command(1,
    SCHEDULED_TIME,\00:00:00\,FROM_REQUEST_START,
    VM_LOAD(21,"d:/seq/hlfp_spm_safe_jiram.mod")
),
note(1,
    SCHEDULED_TIME,\00:00:04\,FROM_PREVIOUS_START,
    TEXT,\"NaN\"
),
end;

request(JRM_010,
    START_TIME,2016-192T09:21:06.000,
    TITLE, "jm0001_JRM_Heater_Op",
    REQUESTOR, "JRMTEAM",
    PROCESSOR, "VC2",
    KEY, "No_Key")

```

			JIR-IAPS-SY-001-2017	
			Issue	1.0
	JUNO/JIRAM		Page	18

```

command(1,
    SCHEDULED_TIME,\00:00:00\,FROM_REQUEST_START,
    THRM_SET_PT_SEL("JIRAM_OH","NON_OPERATIONAL")
),
command(2,
    SCHEDULED_TIME,\00:00:01\,FROM_PREVIOUS_START,
    THRM_SET_PT_SEL("JIRAM_DECON","NON_OPERATIONAL")
),
command(3,
    SCHEDULED_TIME,\00:00:02\,FROM_PREVIOUS_START,
    THRM_SET_PT_SEL("JIRAM_ELECT_BP","NON_OPERATIONAL")
),
    note(1,
        SCHEDULED_TIME,\00:00:04\,FROM_PREVIOUS_START,
        TEXT,\"NaN\"
    ),
end;

request(JRM_011,
    START_TIME,2016-202T03:06:05.000,
    TITLE,"jm0001_JRM_Heater_Op",
    REQUESTOR,"JRMTEAM",
    PROCESSOR,"VC2",
    KEY,"No_Key")
command(1,
    SCHEDULED_TIME,\00:00:00\,FROM_REQUEST_START,
    THRM_SET_PT_SEL("JIRAM_OH","OPERATIONAL")
),
command(2,
    SCHEDULED_TIME,\00:00:01\,FROM_PREVIOUS_START,
    THRM_SET_PT_SEL("JIRAM_DECON","OPERATIONAL")
),
command(3,
    SCHEDULED_TIME,\03:10:00\,FROM_PREVIOUS_START,
    THRM_SET_PT_SEL("JIRAM_ELECT_BP","OPERATIONAL")
),
    note(1,
        SCHEDULED_TIME,\00:00:04\,FROM_PREVIOUS_START,
        TEXT,\"NaN\"
    ),
end;

request(JRM_012,
    START_TIME,2016-202T08:27:05.000,
    TITLE,"jm0001_JRM-POWER_ON",
    REQUESTOR,"JRMTEAM",
    PROCESSOR,"VC2",
    KEY,"No_Key")
spawn(1,
    SCHEDULED_TIME,\00:00:00\,FROM_REQUEST_START,
    REQ_ENGINE_ID,21,RT_on_board_block(jiram_pwr_on)
),
    note(1,
        SCHEDULED_TIME,\00:00:04\,FROM_PREVIOUS_START,
        TEXT,\"NaN\"
    ),
end;

```

			JIR-IAPS-SY-001-2017	
			Issue	1.0
	JUNO/JIRAM		Page	19

```

request(JRM_013,
    START_TIME,2016-202T08:29:48.000,
    TITLE, "jm0001_JRM_StandBy",
    REQUESTOR, "JRMTEAM",
    PROCESSOR, "VC2",
    KEY, "No_Key")
command(1,
    SCHEDULED_TIME,\00:00:00\,FROM_REQUEST_START,
    JRM_SET_PAR(111,10)
),
command(2,
    SCHEDULED_TIME,\00:00:04\,FROM_PREVIOUS_START,
    JRM_STANDBY("ON","ON","ON")
),
command(3,
    SCHEDULED_TIME,\00:00:04\,FROM_PREVIOUS_START,

JRM_SCI_PAR("SCI_I1_S3",120,1,10,"IDIS_SDIS","HSSL","ENABLE","DARK","DISABLE
",0,956,2,150,"LOW","LOW","POINT",-
57343,2,150,"LOW","LOW","SPIN",0,"NO_SUMMED_SCI")
),
note(1,
    SCHEDULED_TIME,\00:00:04\,FROM_PREVIOUS_START,
    TEXT,\"NaN\"
),
end;

request(JRM_014,
    START_TIME,2016-202T08:30:00.000,
    TITLE, "jm0001_JRM_Calibration",
    REQUESTOR, "JRMTEAM",
    PROCESSOR, "VC2",
    KEY, "No_Key")
command(1,
    SCHEDULED_TIME,\00:00:00\,FROM_REQUEST_START,

JRM_CAL_PAR(8,14,8,14,30,700,30,700,30,700,30,700,200,200,153,153)
),
command(2,
    SCHEDULED_TIME,\00:00:04\,FROM_PREVIOUS_START,
    JRM_GET_PAR(6000)
),
command(3,
    SCHEDULED_TIME,\00:00:04\,FROM_PREVIOUS_START,
    JRM_START_HS_REC()
),
command(4,
    SCHEDULED_TIME,\00:00:04\,FROM_PREVIOUS_START,
    JRM_CALIBRATION("CAL_I1_S1","IDIS_SDIS","DISABLE",1,"LAMP_1")
),
command(5,
    SCHEDULED_TIME,\00:04:00\,FROM_PREVIOUS_START,
    JRM_STOP_HS_REC()
),
command(6,
    SCHEDULED_TIME,\00:00:04\,FROM_PREVIOUS_START,

```

			JIR-IAPS-SY-001-2017	
			Issue	1.0
	JUNO/JIRAM		Page	20

```

        JRM_ERROR_LOG()
    ),
    note(1,
        SCHEDULED_TIME,\00:00:04\,FROM_PREVIOUS_START,
        TEXT,\"NaN\"
    ),
end;

request(JRM_015,
    START_TIME,2016-202T08:34:20.000,
    TITLE, "jm0001_JRM_Science",
    REQUESTOR, "JRMTEAM",
    PROCESSOR, "VC2",
    KEY, "No_Key")
command(1,
    SCHEDULED_TIME,\00:00:00\,FROM_REQUEST_START,

JRM_SCI_PAR("SCI_I1_S1",150,1,50,"IDIS_SDIS","HSSL","ENABLE","DARK","DISABLE
",0,3,5000,5000,"LOW","LOW","POINT",-57343,5000,5000,"LOW","LOW","SPIN",-
5257,"NO_SUMMED_SCI")
    ),
command(2,
    SCHEDULED_TIME,\00:00:04\,FROM_PREVIOUS_START,
    JRM_START_HS_REC()
    ),
command(3,
    SCHEDULED_TIME,\00:00:04\,FROM_PREVIOUS_START,
    JRM_SCIENCE()
    ),
command(4,
    SCHEDULED_TIME,\01:15:39\,FROM_PREVIOUS_START,
    JRM_ERROR_LOG()
    ),
command(5,
    SCHEDULED_TIME,\00:00:04\,FROM_PREVIOUS_START,
    JRM_STOP_HS_REC()
    ),
    note(1,
        SCHEDULED_TIME,\00:00:04\,FROM_PREVIOUS_START,
        TEXT,\"ALDEBARAN_HYADES_Approach_Segment\"
    ),
end;

request(JRM_016,
    START_TIME,2016-202T09:54:11.000,
    TITLE, "jm0001_JRM_Science",
    REQUESTOR, "JRMTEAM",
    PROCESSOR, "VC2",
    KEY, "No_Key")
command(1,
    SCHEDULED_TIME,\00:00:00\,FROM_REQUEST_START,

JRM_SCI_PAR("SCI_I1_S1",100,1,50,"IDIS_SDIS","HSSL","ENABLE","DARK","DISABLE
",0,3,5000,5000,"LOW","LOW","POINT",-57343,5000,5000,"LOW","LOW","SPIN",-
4938,"NO_SUMMED_SCI")
    ),
command(2,

```

			JIR-IAPS-SY-001-2017	
			Issue	1.0
	JUNO/JIRAM		Page	21

```

        SCHEDULED_TIME,\00:00:04\,FROM_PREVIOUS_START,
        JRM_START_HS_REC()
    ),
    command(3,
        SCHEDULED_TIME,\00:00:04\,FROM_PREVIOUS_START,
        JRM_SCIENCE()
    ),
    command(4,
        SCHEDULED_TIME,\00:50:39\,FROM_PREVIOUS_START,
        JRM_ERROR_LOG()
    ),
    command(5,
        SCHEDULED_TIME,\00:00:04\,FROM_PREVIOUS_START,
        JRM_STOP_HS_REC()
    ),
    note(1,
        SCHEDULED_TIME,\00:00:04\,FROM_PREVIOUS_START,
        TEXT,\"ALDEBARAN_HYADES_Central_Segment\"
    ),
end;

request(JRM_017,
    START_TIME,2016-202T10:49:02.000,
    TITLE, "jm0001_JRM_Science",
    REQUESTOR, "JRMTEAM",
    PROCESSOR, "VC2",
    KEY, "No_Key")
    command(1,
        SCHEDULED_TIME,\00:00:00\,FROM_REQUEST_START,

JRM_SCI_PAR("SCI_I1_S1",150,1,50,"IDIS_SDIS","HSSL","ENABLE","DARK","DISABLE
",0,3,5000,5000,"LOW","LOW","POINT",-57343,5000,5000,"LOW","LOW","SPIN",-
4779,"NO_SUMMED_SCI")
    ),
    command(2,
        SCHEDULED_TIME,\00:00:04\,FROM_PREVIOUS_START,
        JRM_START_HS_REC()
    ),
    command(3,
        SCHEDULED_TIME,\00:00:04\,FROM_PREVIOUS_START,
        JRM_SCIENCE()
    ),
    command(4,
        SCHEDULED_TIME,\01:15:39\,FROM_PREVIOUS_START,
        JRM_ERROR_LOG()
    ),
    command(5,
        SCHEDULED_TIME,\00:00:04\,FROM_PREVIOUS_START,
        JRM_STOP_HS_REC()
    ),
    note(1,
        SCHEDULED_TIME,\00:00:04\,FROM_PREVIOUS_START,
        TEXT,\"ALDEBARAN_HYADES_Departure_Segment\"
    ),
end;

request(JRM_018,

```

			JIR-IAPS-SY-001-2017	
			Issue	1.0
	JUNO/JIRAM		Page	22

```

START_TIME,2016-202T12:06:53.000,
TITLE, "jm0001_JRM-POWER_OFF",
REQUESTOR, "JRMTEAM",
PROCESSOR, "VC2",
KEY, "No_Key")
command(1,
  SCHEDULED_TIME,\00:00:00\,FROM_REQUEST_START,
  VM_LOAD(21,"d:/seq/hlfp_spm_safe_jiram.mod")
),
note(1,
  SCHEDULED_TIME,\00:00:04\,FROM_PREVIOUS_START,
  TEXT,\"NaN\"
),
end;

request(JRM_019,
  START_TIME,2016-202T12:07:09.000,
  TITLE, "jm0001_JRM-POWER_ON",
  REQUESTOR, "JRMTEAM",
  PROCESSOR, "VC2",
  KEY, "No_Key")
spawn(1,
  SCHEDULED_TIME,\00:00:00\,FROM_REQUEST_START,
  REQ_ENGINE_ID,21,RT_on_board_block(jiram_pwr_on)
),
note(1,
  SCHEDULED_TIME,\00:00:04\,FROM_PREVIOUS_START,
  TEXT,\"NaN\"
),
end;

request(JRM_020,
  START_TIME,2016-202T12:09:52.000,
  TITLE, "jm0001_JRM_StandBy",
  REQUESTOR, "JRMTEAM",
  PROCESSOR, "VC2",
  KEY, "No_Key")
command(1,
  SCHEDULED_TIME,\00:00:00\,FROM_REQUEST_START,
  JRM_SET_PAR(111,10)
),
command(2,
  SCHEDULED_TIME,\00:00:04\,FROM_PREVIOUS_START,
  JRM_STANDBY("ON","ON","ON")
),
command(3,
  SCHEDULED_TIME,\00:00:04\,FROM_PREVIOUS_START,

JRM_SCI_PAR("SCI_I1_S3",120,1,10,"IDIS_SDIS","HSSL","ENABLE","DARK","DISABLE",
0,956,2,150,"LOW","LOW","POINT",-
57343,2,150,"LOW","LOW","SPIN",0,"NO_SUMMED_SCI")
),
note(1,
  SCHEDULED_TIME,\00:00:04\,FROM_PREVIOUS_START,
  TEXT,\"NaN\"
),
end;

```

			JIR-IAPS-SY-001-2017	
			Issue	1.0
	JUNO/JIRAM		Page	23

```

request(JRM_021,
    START_TIME,2016-202T12:10:04.000,
    TITLE, "jm0001_JRM_Science",
    REQUESTOR, "JRMTEAM",
    PROCESSOR, "VC2",
    KEY, "No_Key")
    command(1,
        SCHEDULED_TIME,\00:00:00\,FROM_REQUEST_START,

JRM_SCI_PAR("SCI_I1_S1",150,1,50,"IDIS_SDIS","HSSL","ENABLE","DARK","DISABLE
",0,3,5000,5000,"LOW","LOW","POINT",-57343,5000,5000,"LOW","LOW","SPIN",-
5257,"NO_SUMMED_SCI")
    ),
    command(2,
        SCHEDULED_TIME,\00:00:04\,FROM_PREVIOUS_START,
        JRM_START_HS_REC()
    ),
    command(3,
        SCHEDULED_TIME,\00:00:04\,FROM_PREVIOUS_START,
        JRM_SCIENCE()
    ),
    command(4,
        SCHEDULED_TIME,\01:15:39\,FROM_PREVIOUS_START,
        JRM_ERROR_LOG()
    ),
    command(5,
        SCHEDULED_TIME,\00:00:04\,FROM_PREVIOUS_START,
        JRM_STOP_HS_REC()
    ),
    note(1,
        SCHEDULED_TIME,\00:00:04\,FROM_PREVIOUS_START,
        TEXT,\"ALDEBARAN_HYADES_Approach_Segment\"
    ),
end;

request(JRM_022,
    START_TIME,2016-202T13:29:55.000,
    TITLE, "jm0001_JRM_Science",
    REQUESTOR, "JRMTEAM",
    PROCESSOR, "VC2",
    KEY, "No_Key")
    command(1,
        SCHEDULED_TIME,\00:00:00\,FROM_REQUEST_START,

JRM_SCI_PAR("SCI_I1_S1",100,1,50,"IDIS_SDIS","HSSL","ENABLE","DARK","DISABLE
",0,3,5000,5000,"LOW","LOW","POINT",-57343,5000,5000,"LOW","LOW","SPIN",-
4938,"NO_SUMMED_SCI")
    ),
    command(2,
        SCHEDULED_TIME,\00:00:04\,FROM_PREVIOUS_START,
        JRM_START_HS_REC()
    ),
    command(3,
        SCHEDULED_TIME,\00:00:04\,FROM_PREVIOUS_START,
        JRM_SCIENCE()
    ),

```

			JIR-IAPS-SY-001-2017	
			Issue	1.0
	JUNO/JIRAM		Page	24

```

command(4,
    SCHEDULED_TIME,\00:50:39\,FROM_PREVIOUS_START,
    JRM_ERROR_LOG()
),
command(5,
    SCHEDULED_TIME,\00:00:04\,FROM_PREVIOUS_START,
    JRM_STOP_HS_REC()
),
note(1,
    SCHEDULED_TIME,\00:00:04\,FROM_PREVIOUS_START,
    TEXT,\"ALDEBARAN_HYADES_Central_Segment\"
),
end;

request(JRM_023,
    START_TIME,2016-202T14:24:46.000,
    TITLE, "jm0001_JRM_Science",
    REQUESTOR, "JRMTEAM",
    PROCESSOR, "VC2",
    KEY, "No_Key")
command(1,
    SCHEDULED_TIME,\00:00:00\,FROM_REQUEST_START,
JRM_SCI_PAR("SCI_I1_S1",150,1,50,"IDIS_SDIS","HSSL","ENABLE","DARK","DISABLE
",0,3,5000,5000,"LOW","LOW","POINT",-57343,5000,5000,"LOW","LOW","SPIN",-
4779,"NO_SUMMED_SCI")
),
command(2,
    SCHEDULED_TIME,\00:00:04\,FROM_PREVIOUS_START,
    JRM_START_HS_REC()
),
command(3,
    SCHEDULED_TIME,\00:00:04\,FROM_PREVIOUS_START,
    JRM_SCIENCE()
),
command(4,
    SCHEDULED_TIME,\01:15:39\,FROM_PREVIOUS_START,
    JRM_ERROR_LOG()
),
command(5,
    SCHEDULED_TIME,\00:00:04\,FROM_PREVIOUS_START,
    JRM_STOP_HS_REC()
),
note(1,
    SCHEDULED_TIME,\00:00:04\,FROM_PREVIOUS_START,
    TEXT,\"ALDEBARAN_HYADES_Departure_Segment\"
),
end;

request(JRM_024,
    START_TIME,2016-202T15:45:48.000,
    TITLE, "jm0001_JRM_Science",
    REQUESTOR, "JRMTEAM",
    PROCESSOR, "VC2",
    KEY, "No_Key")
command(1,
    SCHEDULED_TIME,\00:00:00\,FROM_REQUEST_START,

```


			JIR-IAPS-SY-001-2017	
			Issue	1.0
	JUNO/JIRAM		Page	25

```

JRM_SET_PAR(92,153)
),
command(2,
SCHEDULED_TIME,\00:00:04\,FROM_PREVIOUS_START,

JRM_SCI_PAR("SCI_I1_S0",1,1,0,"IDIS_SDIS","HSSL","ENABLE","RN","DISABLE",0,0
,0,0,"LOW","LOW","POINT",28991,5000,5000,"LOW","LOW","POINT",-
57025,"NO_SUMMED_SCI")
),
command(3,
SCHEDULED_TIME,\00:00:04\,FROM_PREVIOUS_START,
JRM_GET_PAR(6000)
),
command(4,
SCHEDULED_TIME,\00:00:04\,FROM_PREVIOUS_START,
JRM_START_HS_REC()
),
command(5,
SCHEDULED_TIME,\00:00:02\,FROM_PREVIOUS_START,
JRM_SCIENCE()
),
command(6,
SCHEDULED_TIME,\00:01:12\,FROM_PREVIOUS_START,

JRM_SCI_PAR("SCI_I1_S0",1,1,0,"IDIS_SDIS","HSSL","ENABLE","RN","DISABLE",0,0
,0,0,"LOW","LOW","POINT",28991,5000,5000,"LOW","LOW","POINT",-
57025,"NO_SUMMED_SCI")
),
command(7,
SCHEDULED_TIME,\00:00:04\,FROM_PREVIOUS_START,
JRM_GET_PAR(6000)
),
command(8,
SCHEDULED_TIME,\00:00:02\,FROM_PREVIOUS_START,
JRM_SCIENCE()
),
command(9,
SCHEDULED_TIME,\00:01:12\,FROM_PREVIOUS_START,

JRM_SCI_PAR("SCI_I1_S0",1,1,0,"IDIS_SDIS","HSSL","ENABLE","RN","DISABLE",0,0
,0,0,"LOW","LOW","POINT",28991,5000,5000,"LOW","LOW","POINT",-
57025,"NO_SUMMED_SCI")
),
command(10,
SCHEDULED_TIME,\00:00:04\,FROM_PREVIOUS_START,
JRM_GET_PAR(6000)
),
command(11,
SCHEDULED_TIME,\00:00:02\,FROM_PREVIOUS_START,
JRM_SCIENCE()
),
command(12,
SCHEDULED_TIME,\00:01:12\,FROM_PREVIOUS_START,
JRM_STOP_HS_REC()
),
command(13,
SCHEDULED_TIME,\00:00:04\,FROM_PREVIOUS_START,

```

			JIR-IAPS-SY-001-2017	
			Issue	1.0
	JUNO/JIRAM		Page	26

```

JRM_SET_PAR(92,8174)
),
command(14,
SCHEDULED_TIME,\00:00:04\,FROM_PREVIOUS_START,
JRM_ERROR_LOG()
),
note(1,
SCHEDULED_TIME,\00:00:04\,FROM_PREVIOUS_START,
TEXT,\"Radiation_Sequence_00_001_PostJOIpxMap_2016-
202T15:45:48.000\"
),
end;

request(JRM_025,
START_TIME,2016-202T15:50:18.000,
TITLE, "jm0001_JRM_Science",
REQUESTOR, "JRMTEAM",
PROCESSOR, "VC2",
KEY, "No_Key")
command(1,
SCHEDULED_TIME,\00:00:00\,FROM_REQUEST_START,
JRM_SET_PAR(92,153)
),
command(2,
SCHEDULED_TIME,\00:00:04\,FROM_PREVIOUS_START,
JRM_SCI_PAR("SCI_I1_S0",1,1,0,"IDIS_SDIS","HSSL","ENABLE","RN","DISABLE",0,0
,0,0,"LOW","LOW","POINT",28991,5000,5000,"LOW","LOW","POINT",-
57025,"NO_SUMMED_SCI")
),
command(3,
SCHEDULED_TIME,\00:00:04\,FROM_PREVIOUS_START,
JRM_GET_PAR(6000)
),
command(4,
SCHEDULED_TIME,\00:00:04\,FROM_PREVIOUS_START,
JRM_START_HS_REC()
),
command(5,
SCHEDULED_TIME,\00:00:02\,FROM_PREVIOUS_START,
JRM_SCIENCE()
),
command(6,
SCHEDULED_TIME,\00:01:12\,FROM_PREVIOUS_START,
JRM_SCI_PAR("SCI_I1_S0",1,1,0,"IDIS_SDIS","HSSL","ENABLE","RN","DISABLE",0,0
,0,0,"LOW","LOW","POINT",28991,5000,5000,"LOW","LOW","POINT",-
57025,"NO_SUMMED_SCI")
),
command(7,
SCHEDULED_TIME,\00:00:04\,FROM_PREVIOUS_START,
JRM_GET_PAR(6000)
),
command(8,
SCHEDULED_TIME,\00:00:02\,FROM_PREVIOUS_START,
JRM_SCIENCE()
),

```

			JIR-IAPS-SY-001-2017	
			Issue	1.0
	JUNO/JIRAM		Page	27

```

command(9,
    SCHEDULED_TIME,\00:01:12\,FROM_PREVIOUS_START,

JRM_SCI_PAR("SCI_I1_S0",1,1,0,"IDIS_SDIS","HSSL","ENABLE","RN","DISABLE",0,0
,0,0,"LOW","LOW","POINT",28991,5000,5000,"LOW","LOW","POINT",-
57025,"NO_SUMMED_SCI")
),
command(10,
    SCHEDULED_TIME,\00:00:04\,FROM_PREVIOUS_START,
    JRM_GET_PAR(6000)
),
command(11,
    SCHEDULED_TIME,\00:00:02\,FROM_PREVIOUS_START,
    JRM_SCIENCE()
),
command(12,
    SCHEDULED_TIME,\00:01:12\,FROM_PREVIOUS_START,
    JRM_STOP_HS_REC()
),
command(13,
    SCHEDULED_TIME,\00:00:04\,FROM_PREVIOUS_START,
    JRM_SET_PAR(92,8174)
),
command(14,
    SCHEDULED_TIME,\00:00:04\,FROM_PREVIOUS_START,
    JRM_ERROR_LOG()
),
note(1,
    SCHEDULED_TIME,\00:00:04\,FROM_PREVIOUS_START,
    TEXT,\"Radiation_Sequence_00_002_PostJOIpxMap_2016-
202T15:50:18.000\"
),
end;

request(JRM_026,
    START_TIME,2016-202T15:54:48.000,
    TITLE,"jm0001_JRM_Science",
    REQUESTOR,"JRMTEAM",
    PROCESSOR,"VC2",
    KEY,"No_Key")
command(1,
    SCHEDULED_TIME,\00:00:00\,FROM_REQUEST_START,
    JRM_SET_PAR(92,153)
),
command(2,
    SCHEDULED_TIME,\00:00:04\,FROM_PREVIOUS_START,

JRM_SCI_PAR("SCI_I1_S0",1,1,0,"IDIS_SDIS","HSSL","ENABLE","RN","DISABLE",0,0
,0,0,"LOW","LOW","POINT",28991,5000,5000,"LOW","LOW","POINT",-
57025,"NO_SUMMED_SCI")
),
command(3,
    SCHEDULED_TIME,\00:00:04\,FROM_PREVIOUS_START,
    JRM_GET_PAR(6000)
),
command(4,
    SCHEDULED_TIME,\00:00:04\,FROM_PREVIOUS_START,

```

			JIR-IAPS-SY-001-2017	
			Issue	1.0
	JUNO/JIRAM		Page	28

```

JRM_START_HS_REC()
),
command(5,
SCHEDULED_TIME,\00:00:02\,FROM_PREVIOUS_START,
JRM_SCIENCE()
),
command(6,
SCHEDULED_TIME,\00:01:12\,FROM_PREVIOUS_START,

JRM_SCI_PAR("SCI_I1_S0",1,1,0,"IDIS_SDIS","HSSL","ENABLE","RN","DISABLE",0,0
,0,0,"LOW","LOW","POINT",28991,5000,5000,"LOW","LOW","POINT",-
57025,"NO_SUMMED_SCI")
),
command(7,
SCHEDULED_TIME,\00:00:04\,FROM_PREVIOUS_START,
JRM_GET_PAR(6000)
),
command(8,
SCHEDULED_TIME,\00:00:02\,FROM_PREVIOUS_START,
JRM_SCIENCE()
),
command(9,
SCHEDULED_TIME,\00:01:12\,FROM_PREVIOUS_START,

JRM_SCI_PAR("SCI_I1_S0",1,1,0,"IDIS_SDIS","HSSL","ENABLE","RN","DISABLE",0,0
,0,0,"LOW","LOW","POINT",28991,5000,5000,"LOW","LOW","POINT",-
57025,"NO_SUMMED_SCI")
),
command(10,
SCHEDULED_TIME,\00:00:04\,FROM_PREVIOUS_START,
JRM_GET_PAR(6000)
),
command(11,
SCHEDULED_TIME,\00:00:02\,FROM_PREVIOUS_START,
JRM_SCIENCE()
),
command(12,
SCHEDULED_TIME,\00:01:12\,FROM_PREVIOUS_START,
JRM_STOP_HS_REC()
),
command(13,
SCHEDULED_TIME,\00:00:04\,FROM_PREVIOUS_START,
JRM_SET_PAR(92,8174)
),
command(14,
SCHEDULED_TIME,\00:00:04\,FROM_PREVIOUS_START,
JRM_ERROR_LOG()
),
note(1,
SCHEDULED_TIME,\00:00:04\,FROM_PREVIOUS_START,
TEXT,\"Radiation_Sequence_00_003_PostJOIpxMap_2016-
202T15:54:48.000\"
),
end;

request(JRM_027,
START_TIME,2016-202T15:59:18.000,

```

			JIR-IAPS-SY-001-2017	
			Issue	1.0
	JUNO/JIRAM		Page	29

```

TITLE, "jm0001_JRM_Science",
REQUESTOR, "JRMTEAM",
PROCESSOR, "VC2",
KEY, "No_Key")
command(1,
  SCHEDULED_TIME,\00:00:00\,FROM_REQUEST_START,
  JRM_SET_PAR(92,153)
),
command(2,
  SCHEDULED_TIME,\00:00:04\,FROM_PREVIOUS_START,

JRM_SCI_PAR("SCI_I1_S0",1,1,0,"IDIS_SDIS","HSSL","ENABLE","RN","DISABLE",0,0
,0,0,"LOW","LOW","POINT",28991,5000,5000,"LOW","LOW","POINT",-
57025,"NO_SUMMED_SCI")
),
command(3,
  SCHEDULED_TIME,\00:00:04\,FROM_PREVIOUS_START,
  JRM_GET_PAR(6000)
),
command(4,
  SCHEDULED_TIME,\00:00:04\,FROM_PREVIOUS_START,
  JRM_START_HS_REC()
),
command(5,
  SCHEDULED_TIME,\00:00:02\,FROM_PREVIOUS_START,
  JRM_SCIENCE()
),
command(6,
  SCHEDULED_TIME,\00:01:12\,FROM_PREVIOUS_START,

JRM_SCI_PAR("SCI_I1_S0",1,1,0,"IDIS_SDIS","HSSL","ENABLE","RN","DISABLE",0,0
,0,0,"LOW","LOW","POINT",28991,5000,5000,"LOW","LOW","POINT",-
57025,"NO_SUMMED_SCI")
),
command(7,
  SCHEDULED_TIME,\00:00:04\,FROM_PREVIOUS_START,
  JRM_GET_PAR(6000)
),
command(8,
  SCHEDULED_TIME,\00:00:02\,FROM_PREVIOUS_START,
  JRM_SCIENCE()
),
command(9,
  SCHEDULED_TIME,\00:01:12\,FROM_PREVIOUS_START,

JRM_SCI_PAR("SCI_I1_S0",1,1,0,"IDIS_SDIS","HSSL","ENABLE","RN","DISABLE",0,0
,0,0,"LOW","LOW","POINT",28991,5000,5000,"LOW","LOW","POINT",-
57025,"NO_SUMMED_SCI")
),
command(10,
  SCHEDULED_TIME,\00:00:04\,FROM_PREVIOUS_START,
  JRM_GET_PAR(6000)
),
command(11,
  SCHEDULED_TIME,\00:00:02\,FROM_PREVIOUS_START,
  JRM_SCIENCE()
),

```

			JIR-IAPS-SY-001-2017		
			Issue	1.0	05/04/17
	JUNO/JIRAM		Page	30	of

```

command(12,
    SCHEDULED_TIME,\00:01:12\,FROM_PREVIOUS_START,
    JRM_STOP_HS_REC()
),
command(13,
    SCHEDULED_TIME,\00:00:04\,FROM_PREVIOUS_START,
    JRM_SET_PAR(92,8174)
),
command(14,
    SCHEDULED_TIME,\00:00:04\,FROM_PREVIOUS_START,
    JRM_ERROR_LOG()
),
note(1,
    SCHEDULED_TIME,\00:00:04\,FROM_PREVIOUS_START,
    TEXT,\"Radiation_Sequence_00_004_PostJOIpxMap_2016-
202T15:59:18.000\"
),
end;

request(JRM_028,
    START_TIME,2016-202T16:03:48.000,
    TITLE, "jm0001_JRM_Science",
    REQUESTOR, "JRMTEAM",
    PROCESSOR, "VC2",
    KEY, "No_Key")
command(1,
    SCHEDULED_TIME,\00:00:00\,FROM_REQUEST_START,
    JRM_SET_PAR(92,153)
),
command(2,
    SCHEDULED_TIME,\00:00:04\,FROM_PREVIOUS_START,
JRM_SCI_PAR("SCI_I1_S0",1,1,0,"IDIS_SDIS","HSSL","ENABLE","RN","DISABLE",0,0
,0,0,"LOW","LOW","POINT",28991,5000,5000,"LOW","LOW","POINT",-
57025,"NO_SUMMED_SCI")
),
command(3,
    SCHEDULED_TIME,\00:00:04\,FROM_PREVIOUS_START,
    JRM_GET_PAR(6000)
),
command(4,
    SCHEDULED_TIME,\00:00:04\,FROM_PREVIOUS_START,
    JRM_START_HS_REC()
),
command(5,
    SCHEDULED_TIME,\00:00:02\,FROM_PREVIOUS_START,
    JRM_SCIENCE()
),
command(6,
    SCHEDULED_TIME,\00:01:12\,FROM_PREVIOUS_START,
JRM_SCI_PAR("SCI_I1_S0",1,1,0,"IDIS_SDIS","HSSL","ENABLE","RN","DISABLE",0,0
,0,0,"LOW","LOW","POINT",28991,5000,5000,"LOW","LOW","POINT",-
57025,"NO_SUMMED_SCI")
),
command(7,
    SCHEDULED_TIME,\00:00:04\,FROM_PREVIOUS_START,

```

			JIR-IAPS-SY-001-2017	
			Issue	1.0
	JUNO/JIRAM		Page	31

```

JRM_GET_PAR(6000)
),
command(8,
  SCHEDULED_TIME,\00:00:02\,FROM_PREVIOUS_START,
  JRM_SCIENCE()
),
command(9,
  SCHEDULED_TIME,\00:01:12\,FROM_PREVIOUS_START,

JRM_SCI_PAR("SCI_I1_S0",1,1,0,"IDIS_SDIS","HSSL","ENABLE","RN","DISABLE",0,0
,0,0,"LOW","LOW","POINT",28991,5000,5000,"LOW","LOW","POINT",-
57025,"NO_SUMMED_SCI")
),
command(10,
  SCHEDULED_TIME,\00:00:04\,FROM_PREVIOUS_START,
  JRM_GET_PAR(6000)
),
command(11,
  SCHEDULED_TIME,\00:00:02\,FROM_PREVIOUS_START,
  JRM_SCIENCE()
),
command(12,
  SCHEDULED_TIME,\00:01:12\,FROM_PREVIOUS_START,
  JRM_STOP_HS_REC()
),
command(13,
  SCHEDULED_TIME,\00:00:04\,FROM_PREVIOUS_START,
  JRM_SET_PAR(92,8174)
),
command(14,
  SCHEDULED_TIME,\00:00:04\,FROM_PREVIOUS_START,
  JRM_ERROR_LOG()
),
note(1,
  SCHEDULED_TIME,\00:00:04\,FROM_PREVIOUS_START,
  TEXT,\"Radiation_Sequence_00_005_PostJOIpxMap_2016-
202T16:03:48.000\"
),
end;

request(JRM_029,
  START_TIME,2016-202T16:08:18.000,
  TITLE, "jm0001_JRM_Science",
  REQUESTOR, "JRMTEAM",
  PROCESSOR, "VC2",
  KEY, "No_Key")
command(1,
  SCHEDULED_TIME,\00:00:00\,FROM_REQUEST_START,
  JRM_SET_PAR(92,153)
),
command(2,
  SCHEDULED_TIME,\00:00:04\,FROM_PREVIOUS_START,

JRM_SCI_PAR("SCI_I1_S0",1,1,0,"IDIS_SDIS","HSSL","ENABLE","RN","DISABLE",0,0
,0,0,"LOW","LOW","POINT",28991,5000,5000,"LOW","LOW","POINT",-
57025,"NO_SUMMED_SCI")
),

```

			JIR-IAPS-SY-001-2017	
			Issue	1.0
	JUNO/JIRAM		Page	32

```

command(3,
    SCHEDULED_TIME,\00:00:04\,FROM_PREVIOUS_START,
    JRM_GET_PAR(6000)
),
command(4,
    SCHEDULED_TIME,\00:00:04\,FROM_PREVIOUS_START,
    JRM_START_HS_REC()
),
command(5,
    SCHEDULED_TIME,\00:00:02\,FROM_PREVIOUS_START,
    JRM_SCIENCE()
),
command(6,
    SCHEDULED_TIME,\00:01:12\,FROM_PREVIOUS_START,
    JRM_SCI_PAR("SCI_I1_S0",1,1,0,"IDIS_SDIS","HSSL","ENABLE","RN","DISABLE",0,0
,0,0,"LOW","LOW","POINT",28991,5000,5000,"LOW","LOW","POINT",-
57025,"NO_SUMMED_SCI")
),
command(7,
    SCHEDULED_TIME,\00:00:04\,FROM_PREVIOUS_START,
    JRM_GET_PAR(6000)
),
command(8,
    SCHEDULED_TIME,\00:00:02\,FROM_PREVIOUS_START,
    JRM_SCIENCE()
),
command(9,
    SCHEDULED_TIME,\00:01:12\,FROM_PREVIOUS_START,
    JRM_SCI_PAR("SCI_I1_S0",1,1,0,"IDIS_SDIS","HSSL","ENABLE","RN","DISABLE",0,0
,0,0,"LOW","LOW","POINT",28991,5000,5000,"LOW","LOW","POINT",-
57025,"NO_SUMMED_SCI")
),
command(10,
    SCHEDULED_TIME,\00:00:04\,FROM_PREVIOUS_START,
    JRM_GET_PAR(6000)
),
command(11,
    SCHEDULED_TIME,\00:00:02\,FROM_PREVIOUS_START,
    JRM_SCIENCE()
),
command(12,
    SCHEDULED_TIME,\00:01:12\,FROM_PREVIOUS_START,
    JRM_STOP_HS_REC()
),
command(13,
    SCHEDULED_TIME,\00:00:04\,FROM_PREVIOUS_START,
    JRM_SET_PAR(92,8174)
),
command(14,
    SCHEDULED_TIME,\00:00:04\,FROM_PREVIOUS_START,
    JRM_ERROR_LOG()
),
note(1,
    SCHEDULED_TIME,\00:00:04\,FROM_PREVIOUS_START,
    TEXT,\"Radiation_Sequence_00_006_PostJOIpxMap_2016-

```


			JIR-IAPS-SY-001-2017	
			Issue	1.0
	JUNO/JIRAM		Page	33

```
202T16:08:18.000"\  
    ),  
end;
```

```
request(JRM_030,  
    START_TIME,2016-202T16:12:48.000,  
    TITLE, "jm0001_JRM_Science",  
    REQUESTOR, "JRMTEAM",  
    PROCESSOR, "VC2",  
    KEY, "No_Key")  
command(1,  
    SCHEDULED_TIME,\00:00:00\,FROM_REQUEST_START,  
    JRM_SET_PAR(92,153)  
),  
command(2,  
    SCHEDULED_TIME,\00:00:04\,FROM_PREVIOUS_START,
```

```
JRM_SCI_PAR("SCI_I1_S0",1,1,0,"IDIS_SDIS","HSSL","ENABLE","RN","DISABLE",0,0  
,0,0,"LOW","LOW","POINT",28991,5000,5000,"LOW","LOW","POINT",-  
57025,"NO_SUMMED_SCI")
```

```
),  
command(3,  
    SCHEDULED_TIME,\00:00:04\,FROM_PREVIOUS_START,  
    JRM_GET_PAR(6000)  
),  
command(4,  
    SCHEDULED_TIME,\00:00:04\,FROM_PREVIOUS_START,  
    JRM_START_HS_REC()  
),  
command(5,  
    SCHEDULED_TIME,\00:00:02\,FROM_PREVIOUS_START,  
    JRM_SCIENCE()  
),  
command(6,  
    SCHEDULED_TIME,\00:01:12\,FROM_PREVIOUS_START,
```

```
JRM_SCI_PAR("SCI_I1_S0",1,1,0,"IDIS_SDIS","HSSL","ENABLE","RN","DISABLE",0,0  
,0,0,"LOW","LOW","POINT",28991,5000,5000,"LOW","LOW","POINT",-  
57025,"NO_SUMMED_SCI")
```

```
),  
command(7,  
    SCHEDULED_TIME,\00:00:04\,FROM_PREVIOUS_START,  
    JRM_GET_PAR(6000)  
),  
command(8,  
    SCHEDULED_TIME,\00:00:02\,FROM_PREVIOUS_START,  
    JRM_SCIENCE()  
),  
command(9,  
    SCHEDULED_TIME,\00:01:12\,FROM_PREVIOUS_START,
```

```
JRM_SCI_PAR("SCI_I1_S0",1,1,0,"IDIS_SDIS","HSSL","ENABLE","RN","DISABLE",0,0  
,0,0,"LOW","LOW","POINT",28991,5000,5000,"LOW","LOW","POINT",-  
57025,"NO_SUMMED_SCI")
```

```
),  
command(10,  
    SCHEDULED_TIME,\00:00:04\,FROM_PREVIOUS_START,
```

			JIR-IAPS-SY-001-2017	
			Issue	1.0
	JUNO/JIRAM		Page	34

```

        JRM_GET_PAR(6000)
    ),
    command(11,
        SCHEDULED_TIME,\00:00:02\,FROM_PREVIOUS_START,
        JRM_SCIENCE()
    ),
    command(12,
        SCHEDULED_TIME,\00:01:12\,FROM_PREVIOUS_START,
        JRM_STOP_HS_REC()
    ),
    command(13,
        SCHEDULED_TIME,\00:00:04\,FROM_PREVIOUS_START,
        JRM_SET_PAR(92,8174)
    ),
    command(14,
        SCHEDULED_TIME,\00:00:04\,FROM_PREVIOUS_START,
        JRM_ERROR_LOG()
    ),
    note(1,
        SCHEDULED_TIME,\00:00:04\,FROM_PREVIOUS_START,
        TEXT,\"Radiation_Sequence_00_007_PostJOIpxMap_2016-
202T16:12:48.000\"
    ),
    end;

request(JRM_031,
    START_TIME,2016-202T16:17:18.000,
    TITLE, "jm0001_JRM_Science",
    REQUESTOR, "JRMTEAM",
    PROCESSOR, "VC2",
    KEY, "No_Key")
    command(1,
        SCHEDULED_TIME,\00:00:00\,FROM_REQUEST_START,
        JRM_SET_PAR(92,153)
    ),
    command(2,
        SCHEDULED_TIME,\00:00:04\,FROM_PREVIOUS_START,

JRM_SCI_PAR("SCI_I1_S0",1,1,0,"IDIS_SDIS","HSSL","ENABLE","RN","DISABLE",0,0
,0,0,"LOW","LOW","POINT",28991,2500,2500,"LOW","LOW","POINT",-
57025,"NO_SUMMED_SCI")
    ),
    command(3,
        SCHEDULED_TIME,\00:00:04\,FROM_PREVIOUS_START,
        JRM_GET_PAR(6000)
    ),
    command(4,
        SCHEDULED_TIME,\00:00:04\,FROM_PREVIOUS_START,
        JRM_START_HS_REC()
    ),
    command(5,
        SCHEDULED_TIME,\00:00:02\,FROM_PREVIOUS_START,
        JRM_SCIENCE()
    ),
    command(6,
        SCHEDULED_TIME,\00:01:12\,FROM_PREVIOUS_START,

```

			JIR-IAPS-SY-001-2017		
			Issue	1.0	05/04/17
	JUNO/JIRAM		Page	35	of

```
JRM_SCI_PAR("SCI_I1_S0",1,1,0,"IDIS_SDIS","HSSL","ENABLE","RN","DISABLE",0,0,0,0,"LOW","LOW","POINT",28991,2500,2500,"LOW","LOW","POINT",-57025,"NO_SUMMED_SCI")
```

```
),
command(7,
    SCHEDULED_TIME,\00:00:04\,FROM_PREVIOUS_START,
    JRM_GET_PAR(6000)
),
command(8,
    SCHEDULED_TIME,\00:00:02\,FROM_PREVIOUS_START,
    JRM_SCIENCE()
),
command(9,
    SCHEDULED_TIME,\00:01:12\,FROM_PREVIOUS_START,
```

```
JRM_SCI_PAR("SCI_I1_S0",1,1,0,"IDIS_SDIS","HSSL","ENABLE","RN","DISABLE",0,0,0,0,"LOW","LOW","POINT",28991,2500,2500,"LOW","LOW","POINT",-57025,"NO_SUMMED_SCI")
```

```
),
command(10,
    SCHEDULED_TIME,\00:00:04\,FROM_PREVIOUS_START,
    JRM_GET_PAR(6000)
),
command(11,
    SCHEDULED_TIME,\00:00:02\,FROM_PREVIOUS_START,
    JRM_SCIENCE()
),
command(12,
    SCHEDULED_TIME,\00:01:12\,FROM_PREVIOUS_START,
    JRM_STOP_HS_REC()
),
command(13,
    SCHEDULED_TIME,\00:00:04\,FROM_PREVIOUS_START,
    JRM_SET_PAR(92,8174)
),
command(14,
    SCHEDULED_TIME,\00:00:04\,FROM_PREVIOUS_START,
    JRM_ERROR_LOG()
),
note(1,
    SCHEDULED_TIME,\00:00:04\,FROM_PREVIOUS_START,
    TEXT,\"Radiation_Sequence_00_008_PostJOIpxMap500ms_2016-202T16:17:18.000\"
),
end;
```

```
request(JRM_032,
    START_TIME,2016-202T16:21:48.000,
    TITLE,"jm0001_JRM_Science",
    REQUESTOR,"JRMTEAM",
    PROCESSOR,"VC2",
    KEY,"No_Key")
command(1,
    SCHEDULED_TIME,\00:00:00\,FROM_REQUEST_START,
    JRM_SET_PAR(92,153)
),
command(2,
```

			JIR-IAPS-SY-001-2017		
			Issue	1.0	05/04/17
	JUNO/JIRAM		Page	36	of

```

SCHEDULED_TIME,\00:00:04\,FROM_PREVIOUS_START,

JRM_SCI_PAR("SCI_I1_S0",1,1,0,"IDIS_SDIS","HSSL","ENABLE","RN","DISABLE",0,0
,0,0,"LOW","LOW","POINT",28991,1000,1000,"LOW","LOW","POINT",-
57025,"NO_SUMMED_SCI")
),
command(3,
SCHEDULED_TIME,\00:00:04\,FROM_PREVIOUS_START,
JRM_GET_PAR(6000)
),
command(4,
SCHEDULED_TIME,\00:00:04\,FROM_PREVIOUS_START,
JRM_START_HS_REC()
),
command(5,
SCHEDULED_TIME,\00:00:02\,FROM_PREVIOUS_START,
JRM_SCIENCE()
),
command(6,
SCHEDULED_TIME,\00:01:12\,FROM_PREVIOUS_START,

JRM_SCI_PAR("SCI_I1_S0",1,1,0,"IDIS_SDIS","HSSL","ENABLE","RN","DISABLE",0,0
,0,0,"LOW","LOW","POINT",28991,1000,1000,"LOW","LOW","POINT",-
57025,"NO_SUMMED_SCI")
),
command(7,
SCHEDULED_TIME,\00:00:04\,FROM_PREVIOUS_START,
JRM_GET_PAR(6000)
),
command(8,
SCHEDULED_TIME,\00:00:02\,FROM_PREVIOUS_START,
JRM_SCIENCE()
),
command(9,
SCHEDULED_TIME,\00:01:12\,FROM_PREVIOUS_START,

JRM_SCI_PAR("SCI_I1_S0",1,1,0,"IDIS_SDIS","HSSL","ENABLE","RN","DISABLE",0,0
,0,0,"LOW","LOW","POINT",28991,1000,1000,"LOW","LOW","POINT",-
57025,"NO_SUMMED_SCI")
),
command(10,
SCHEDULED_TIME,\00:00:04\,FROM_PREVIOUS_START,
JRM_GET_PAR(6000)
),
command(11,
SCHEDULED_TIME,\00:00:02\,FROM_PREVIOUS_START,
JRM_SCIENCE()
),
command(12,
SCHEDULED_TIME,\00:01:12\,FROM_PREVIOUS_START,
JRM_STOP_HS_REC()
),
command(13,
SCHEDULED_TIME,\00:00:04\,FROM_PREVIOUS_START,
JRM_SET_PAR(92,8174)
),
command(14,

```

			JIR-IAPS-SY-001-2017	
			Issue	1.0
	JUNO/JIRAM		Page	37

```

SCHEDULED_TIME,\00:00:04\,FROM_PREVIOUS_START,
JRM_ERROR_LOG()
),
note(1,
SCHEDULED_TIME,\00:00:04\,FROM_PREVIOUS_START,
TEXT,\"Radiation_Sequence_00_009_PostJOIpxMap200ms_2016-
202T16:21:48.000\"
),
end;

request(JRM_033,
START_TIME,2016-202T16:26:18.000,
TITLE, \"jm0001_JRM_Science\",
REQUESTOR, \"JRMTEAM\",
PROCESSOR, \"VC2\",
KEY, \"No_Key\")
command(1,
SCHEDULED_TIME,\00:00:00\,FROM_REQUEST_START,
JRM_SET_PAR(92,153)
),
command(2,
SCHEDULED_TIME,\00:00:04\,FROM_PREVIOUS_START,
JRM_SCI_PAR(\"SCI_I1_S0\",1,1,0,\"IDIS_SDIS\",\"HSSL\",\"ENABLE\",\"RN\",\"DISABLE\",0,0
,0,0,\"LOW\",\"LOW\",\"POINT\",28991,500,500,\"LOW\",\"LOW\",\"POINT\",-
57025,\"NO_SUMMED_SCI\")
),
command(3,
SCHEDULED_TIME,\00:00:04\,FROM_PREVIOUS_START,
JRM_GET_PAR(6000)
),
command(4,
SCHEDULED_TIME,\00:00:04\,FROM_PREVIOUS_START,
JRM_START_HS_REC()
),
command(5,
SCHEDULED_TIME,\00:00:02\,FROM_PREVIOUS_START,
JRM_SCIENCE()
),
command(6,
SCHEDULED_TIME,\00:01:12\,FROM_PREVIOUS_START,
JRM_SCI_PAR(\"SCI_I1_S0\",1,1,0,\"IDIS_SDIS\",\"HSSL\",\"ENABLE\",\"RN\",\"DISABLE\",0,0
,0,0,\"LOW\",\"LOW\",\"POINT\",28991,500,500,\"LOW\",\"LOW\",\"POINT\",-
57025,\"NO_SUMMED_SCI\")
),
command(7,
SCHEDULED_TIME,\00:00:04\,FROM_PREVIOUS_START,
JRM_GET_PAR(6000)
),
command(8,
SCHEDULED_TIME,\00:00:02\,FROM_PREVIOUS_START,
JRM_SCIENCE()
),
command(9,
SCHEDULED_TIME,\00:01:12\,FROM_PREVIOUS_START,

```

			JIR-IAPS-SY-001-2017	
			Issue	1.0
	JUNO/JIRAM		Page	38

```

JRM_SCI_PAR("SCI_I1_S0",1,1,0,"IDIS_SDIS","HSSL","ENABLE","RN","DISABLE",0,0
,0,0,"LOW","LOW","POINT",28991,500,500,"LOW","LOW","POINT",-
57025,"NO_SUMMED_SCI")
),
command(10,
SCHEDULED_TIME,\00:00:04\,FROM_PREVIOUS_START,
JRM_GET_PAR(6000)
),
command(11,
SCHEDULED_TIME,\00:00:02\,FROM_PREVIOUS_START,
JRM_SCIENCE()
),
command(12,
SCHEDULED_TIME,\00:01:12\,FROM_PREVIOUS_START,
JRM_STOP_HS_REC()
),
command(13,
SCHEDULED_TIME,\00:00:04\,FROM_PREVIOUS_START,
JRM_SET_PAR(92,8174)
),
command(14,
SCHEDULED_TIME,\00:00:04\,FROM_PREVIOUS_START,
JRM_ERROR_LOG()
),
note(1,
SCHEDULED_TIME,\00:00:04\,FROM_PREVIOUS_START,
TEXT,\"Radiation_Sequence_00_010_PostJOIpxMap100ms_2016-
202T16:26:18.000\"
),
end;

request(JRM_034,
START_TIME,2016-202T16:30:48.000,
TITLE,"jm0001_JRM_Science",
REQUESTOR,"JRMTEAM",
PROCESSOR,"VC2",
KEY,"No_Key")
command(1,
SCHEDULED_TIME,\00:00:00\,FROM_REQUEST_START,
JRM_SET_PAR(92,153)
),
command(2,
SCHEDULED_TIME,\00:00:04\,FROM_PREVIOUS_START,

JRM_SCI_PAR("SCI_I1_S0",1,1,0,"IDIS_SDIS","HSSL","ENABLE","RN","DISABLE",0,0
,0,0,"LOW","LOW","POINT",28991,250,250,"LOW","LOW","POINT",-
57025,"NO_SUMMED_SCI")
),
command(3,
SCHEDULED_TIME,\00:00:04\,FROM_PREVIOUS_START,
JRM_GET_PAR(6000)
),
command(4,
SCHEDULED_TIME,\00:00:04\,FROM_PREVIOUS_START,
JRM_START_HS_REC()
),
command(5,

```

			JIR-IAPS-SY-001-2017	
			Issue	1.0
	JUNO/JIRAM		Page	39

```

        SCHEDULED_TIME,\00:00:02\,FROM_PREVIOUS_START,
        JRM_SCIENCE()
    ),
    command(6,
        SCHEDULED_TIME,\00:01:12\,FROM_PREVIOUS_START,

JRM_SCI_PAR("SCI_I1_S0",1,1,0,"IDIS_SDIS","HSSL","ENABLE","RN","DISABLE",0,0
,0,0,"LOW","LOW","POINT",28991,250,250,"LOW","LOW","POINT",-
57025,"NO_SUMMED_SCI")
    ),
    command(7,
        SCHEDULED_TIME,\00:00:04\,FROM_PREVIOUS_START,
        JRM_GET_PAR(6000)
    ),
    command(8,
        SCHEDULED_TIME,\00:00:02\,FROM_PREVIOUS_START,
        JRM_SCIENCE()
    ),
    command(9,
        SCHEDULED_TIME,\00:01:12\,FROM_PREVIOUS_START,

JRM_SCI_PAR("SCI_I1_S0",1,1,0,"IDIS_SDIS","HSSL","ENABLE","RN","DISABLE",0,0
,0,0,"LOW","LOW","POINT",28991,250,250,"LOW","LOW","POINT",-
57025,"NO_SUMMED_SCI")
    ),
    command(10,
        SCHEDULED_TIME,\00:00:04\,FROM_PREVIOUS_START,
        JRM_GET_PAR(6000)
    ),
    command(11,
        SCHEDULED_TIME,\00:00:02\,FROM_PREVIOUS_START,
        JRM_SCIENCE()
    ),
    command(12,
        SCHEDULED_TIME,\00:01:12\,FROM_PREVIOUS_START,
        JRM_STOP_HS_REC()
    ),
    command(13,
        SCHEDULED_TIME,\00:00:04\,FROM_PREVIOUS_START,
        JRM_SET_PAR(92,8174)
    ),
    command(14,
        SCHEDULED_TIME,\00:00:04\,FROM_PREVIOUS_START,
        JRM_ERROR_LOG()
    ),
    note(1,
        SCHEDULED_TIME,\00:00:04\,FROM_PREVIOUS_START,
        TEXT,\"Radiation_Sequence_00_011_PostJOIpxMap50ms_2016-
202T16:30:48.000\"
    ),
end;

request(JRM_035,
    START_TIME,2016-202T16:35:02.000,
    TITLE, "jm0001_JRM_Calibration",
    REQUESTOR, "JRMTEAM",
    PROCESSOR, "VC2",

```

			JIR-IAPS-SY-001-2017		
			Issue	1.0	05/04/17
	JUNO/JIRAM		Page	40	of

```

KEY, "No_Key")
command(1,
    SCHEDULED_TIME,\00:00:00\,FROM_REQUEST_START,
JRM_CAL_PAR(8,14,8,14,30,700,30,700,30,700,30,700,200,200,153,153)
),
command(2,
    SCHEDULED_TIME,\00:00:04\,FROM_PREVIOUS_START,
    JRM_GET_PAR(6000)
),
command(3,
    SCHEDULED_TIME,\00:00:04\,FROM_PREVIOUS_START,
    JRM_START_HS_REC()
),
command(4,
    SCHEDULED_TIME,\00:00:04\,FROM_PREVIOUS_START,
    JRM_CALIBRATION("CAL_I1_S1", "IDIS_SDIS", "DISABLE", 1, "LAMP_1")
),
command(5,
    SCHEDULED_TIME,\00:04:00\,FROM_PREVIOUS_START,
    JRM_STOP_HS_REC()
),
command(6,
    SCHEDULED_TIME,\00:00:04\,FROM_PREVIOUS_START,
    JRM_ERROR_LOG()
),
note(1,
    SCHEDULED_TIME,\00:00:04\,FROM_PREVIOUS_START,
    TEXT,\ "NaN"\
),
end;

request(JRM_036,
    START_TIME,2016-202T16:39:22.000,
    TITLE, "jm0001_JRM-POWER_OFF",
    REQUESTOR, "JRMTEAM",
    PROCESSOR, "VC2",
    KEY, "No_Key")
command(1,
    SCHEDULED_TIME,\00:00:00\,FROM_REQUEST_START,
    VM_LOAD(21,"d:/seq/hlfp_spm_safe_jiram.mod")
),
note(1,
    SCHEDULED_TIME,\00:00:04\,FROM_PREVIOUS_START,
    TEXT,\ "NaN"\
),
end;

request(JRM_037,
    START_TIME,2016-202T16:39:38.000,
    TITLE, "jm0001_JRM_Heater_Op",
    REQUESTOR, "JRMTEAM",
    PROCESSOR, "VC2",
    KEY, "No_Key")
command(1,
    SCHEDULED_TIME,\00:00:00\,FROM_REQUEST_START,
    THRM_SET_PT_SEL("JIRAM_OH", "NON_OPERATIONAL")

```


			JIR-IAPS-SY-001-2017	
			Issue	1.0
	JUNO/JIRAM		Page	41

```

),
command(2,
    SCHEDULED_TIME,\00:00:01\,FROM_PREVIOUS_START,
    THRM_SET_PT_SEL("JIRAM_DECON","NON_OPERATIONAL")
),
command(3,
    SCHEDULED_TIME,\00:00:02\,FROM_PREVIOUS_START,
    THRM_SET_PT_SEL("JIRAM_ELECT_BP","NON_OPERATIONAL")
),
end;
$$EOF

```